

### Aviasafe GmbH

Headoffice 60489 Frankfurt am Main/Germany  
Eschborner Land Str. 55

Tel +49 69 340 03 314

Fax +49 69 707 978 04

Factory DE 98597 Fambach Neue Wiese 2

Tel +49 368 482 764 70

info@aviasafe.de

www.aviasafe.de



- Designed with few mechanical parts, resulting in a more affordable price and allowing for longer maintenance intervals.
- Fully dimmable lights. The light output is variable, similar to a traditional halogen light, operating within the 2.8 A to 6.6 A range.
- Low protrusion, Style 3 inset light fixtures.
- The electronics are fully encapsulated.
- Optimized LED performance ensures there are no visual flickers.
- The Dome is designed with no negative slope in front of the prism.
- Built-in voltage surge and lightning protection.

### INSTALLATION

Light fixture can be installed in 8-inch Shallow Base & Deep Base, or 12-inch bases by an Adaptor Ring.

*Refer to the user manual*

### ENVIRONMENTAL CONDITIONS

**Temperature:** -45 °C to +55 °C

-49 °F to +131 °F

**Humidity:** Up to 100%

### DIMENSIONS & WEIGHT

**Diameter:** 214 mm

**Depth:** 106 mm

**Weight:** 3.7 kg

### COMPLIANCE

**ICAO** Annex 14 - Volume I

**EASA** CS-ADR-DSN

**FAA** AC150/5345-46 & EB No.67D

**IEC** TS 61827

**NATO** STANAG 3316

**CAA** CAP 168

**IAEE** TP312

### FEATURES & BENEFITS

- LED Unidirectional 8"
- Average LED life of 60,000 hours at full intensity but over 100,000 hours in typical operating conditions.
- Very low energy consumption compared to halogen lights, resulting in a lower range of CCRs and transformers.
- Low life cycle costs due to the long LED lifespan.
- Operates on 3-step or 5-step ferroresonant or thyristor CCRs.
- In compliance with FAA & EASA standards.
- Fully compatible with existing Airfield Lighting infrastructure. Installation on the same mounting device as most conventional lights for a straightforward replacement.
- IP68: Dust-tight and protected against submersion in water.

### APPLICATIONS

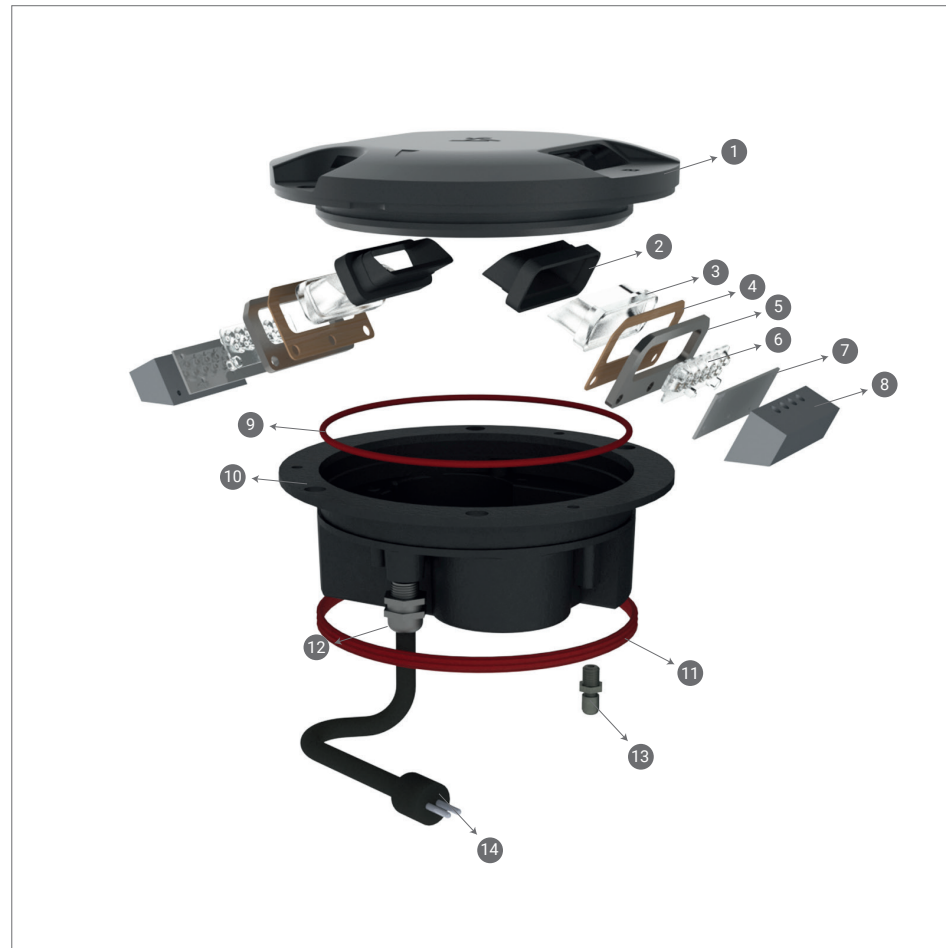
- Taxiway Centerline
- Stop Bar
- Intermediate Holding Positions



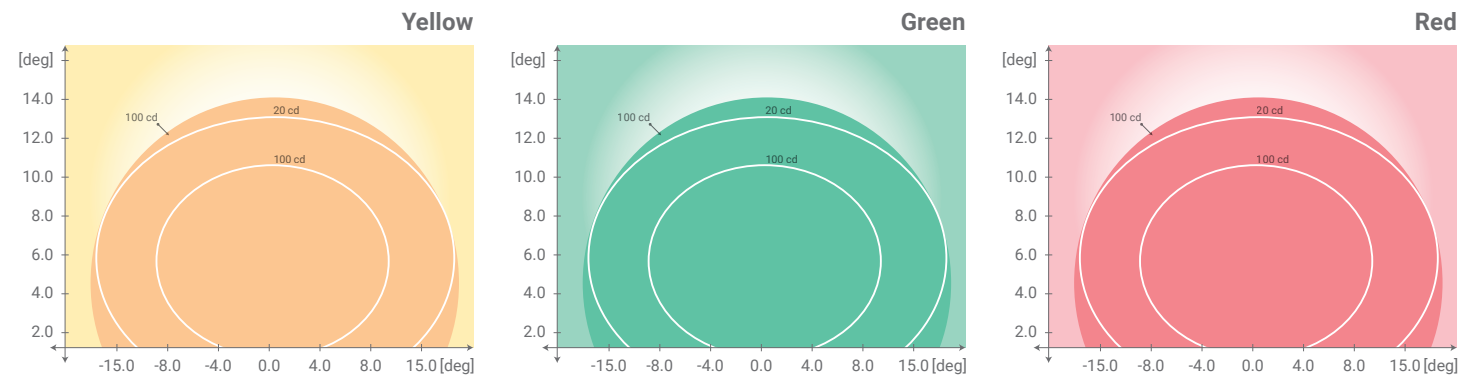
### COMPONENTS

01. Dome (Upper Cover)
02. Prism Gasket
03. Prism
04. Prism Holder Gasket
05. Prism Holder
06. TIR (Lens)
07. LED PCB
08. LED Headsink
09. O-Ring for Dome
10. Lower Cover with Electronics
11. Lower Cover Gasket
12. Cable Gland
13. Air Valve
14. Plug

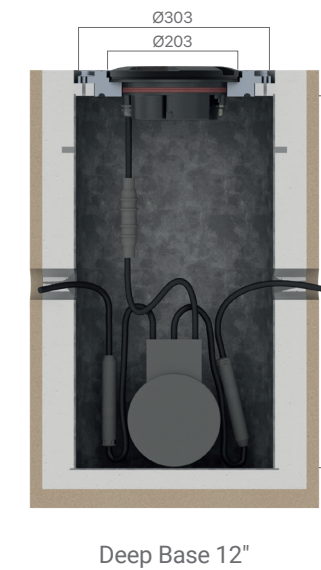
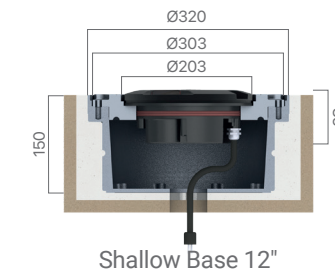
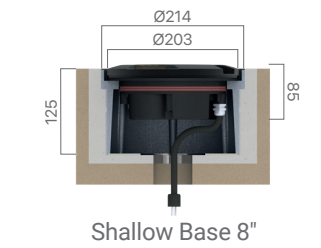
Refer to the user manual



### PHOMETRIC PERFORMANCE



### INSTALLATION SECTION



### ELECTRICAL TABLE

TYPE	Consumption at 6.6A		Power Factor	
	1 Plug	2 Plugs	2.8A	6.6A
Unidirectional 12-"8" Without Heater	7 VA	-	0.96	0.98
Unidirectional 8" With Heater	27 VA	-	0.96	0.98
Unidirectional 12" With Heater	47 AV	-	0.96	0.98
Bidirectional 12-"8" Without Heater	12 AV	14 AV	0.96	0.98
Bidirectional 8" With Heater	32 AV	54 AV	0.96	0.98
Bidirectional 12" With Heater	52 AV	94 AV	0.96	0.98

IN-TC GG 2P M H R

8" Inset Light Type  
for Taxiway Centerline & Stop Bar

Color (Side A)/(Side B)  
G = Green  
Y = Yellow  
R = Red

Cable & Connectors  
• 1P : One Plug  
• 2P : Two Plugs

Monitoring  
• M : with Monitoring  
• Q : without Monitoring

Heater  
• H : with Heater  
• C : without Heater

Mounting Assembly  
• N : No mounting assembly  
• R : with Adaptor Ring (12 - "8")

