

Aviasafe GmbH

Headoffice 60489 Frankfurt am Main/Germany
Eschborner Land Str. 55

Tel +49 69 340 03 314

Fax +49 69 707 978 04

Factory DE 98597 Fambach Neue Wiese 2

Tel +49 368 482 764 70

info@aviasafe.de

www.aviasafe.de



- Built-in voltage surge and lightning protection.
- The FSU features waterproof 3-pin and 5-pin connectors for easy installation
- Remote control is incorporated into the Aviasafe Airfield Lighting Control and Monitoring System (ALCMS) and can easily interface with other platforms
- Simple and quick installation
- A thermostatically controlled heater is provided to prevent the accumulation of snow and ice from covering the light output (optional)
- Instant detection of an internal malfunction
- Designed for durability and withstanding shock and vibration
- Protection degree: IP67

INSTALLATION

Specific tools available for easy and precise installation

**refer to the user manual*

COMPLIANCES

ICAO Annex 14 - Volume I

EASA CS-ADR-DSN

FAA EB No.67D

IEC TS 61827

NATO STANAG 3316

APPLICATIONS

- Approach Flashing Light System
- Runway Threshold Identification (RTIL)
- Runway End Identification (REIL)

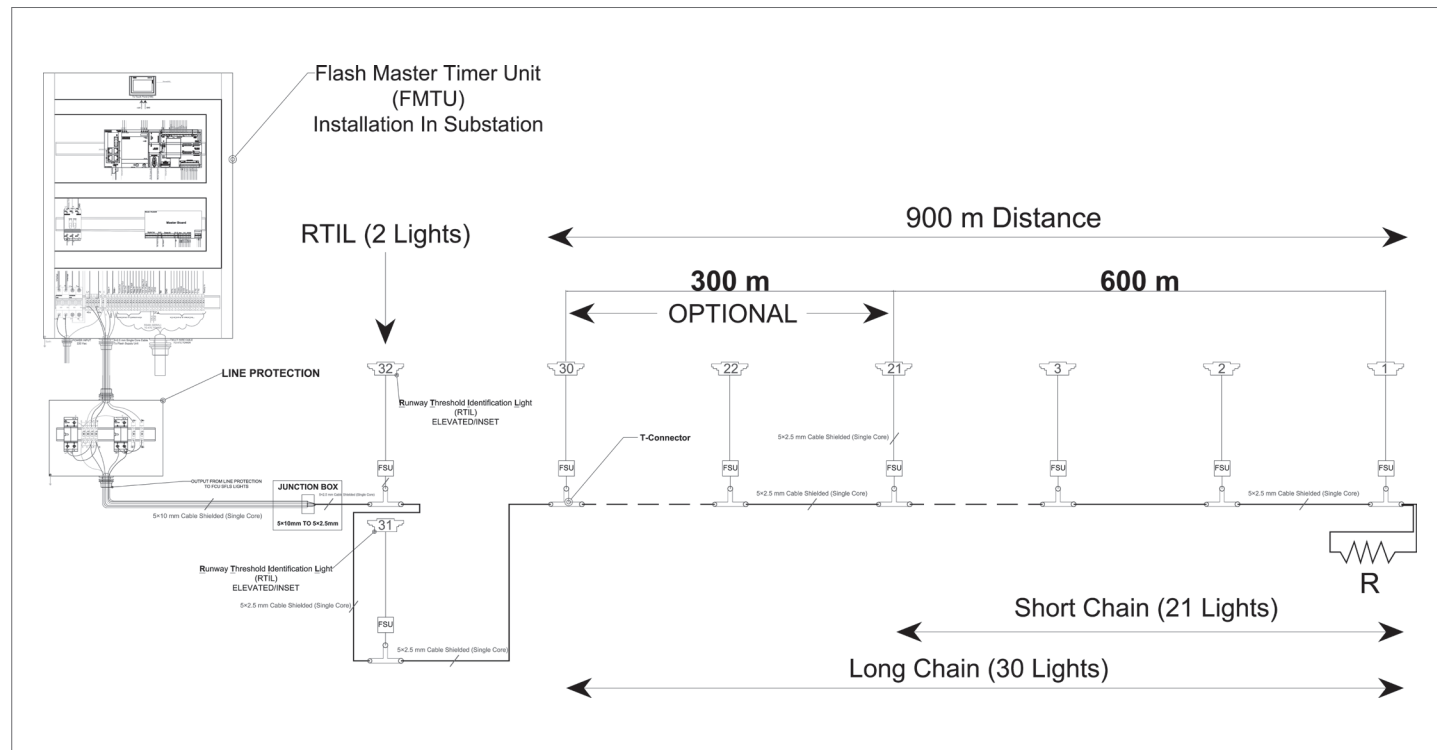
FEATURES & BENEFITS

- Complete digital control and monitoring
- Average LED life of 60,000 hours at full intensity but over 100,000 hours in typical operating conditions.
- Flashing light at one or two flashes per second.
- Three Adjustable Brightness Levels: High (100%), Medium (10%), and Low (3%)
- Adjustable number of synchronized flashing lights
- Each Flashing Light can simultaneously operate and control both inset and elevated lights
- Individual light control and monitoring capability in any operating state
- Adjustable light intensity
- User-friendly local control via a touch screen for easy operation

ENVIRONMENTAL CONDITIONS

- **Temperature:** -45 °C to +55 °C
-49 °F to +131 °F
- **Humidity:** Up to 100%

Control Unit Characteristics	
Power supply	220 VAC, 1 Ph., 50/60 Hz
Power consumption	~ 1,4 kVA
Fuse	Internal fuse automat 32A
Communication interface remote control	MODBUS RTU / MODBUS TCP 12x 24VDC Input parallel interface 14x 24VDC Output parallel interface
Communication interface service computer	Ethernet
Communication interface flash lights	2-wire RS-485
Environmental temperature	-25°C +45 °C
Relative humidity, not condensed	10% - 90%
Altitude over NIN (operation)	IP 43
International Protection class	-100m + 2.500 m
Housing	Metal housing wall mounted
Dimensions	710 x 500 x 270 mm (W x H x D)
Weight	~ 36 kg

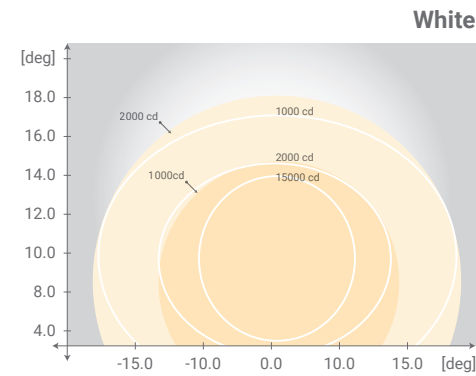


MAIN COMPONENTS OF THE INSET LIGHT UNIT

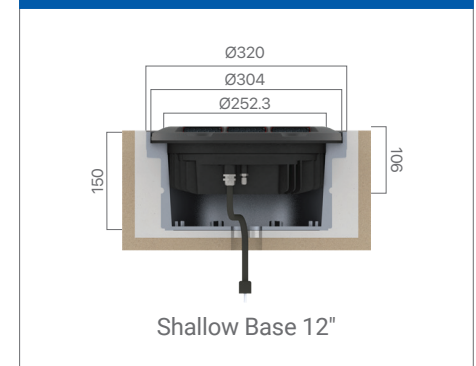
01. Dome (Upper Cover)
02. Prism Gasket
03. Prism
04. Prism holder gasket
05. Prism holder
06. TIR
07. LED PCB
08. Heatsink
09. O-Ring for dome (internal)
10. O-Ring for lower cover
11. Lower cover with electronics
12. Gland with accessories
13. Valve for watertightness test
14. Plug(lead wire)



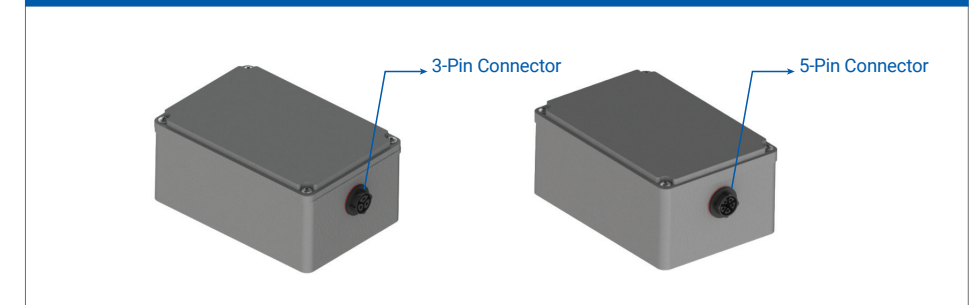
PHOMETRIC PERFORMANCE



DIMENSIONS



FLASH SYSTEM UNIT (FSU)



Inset Sequential Flash Light

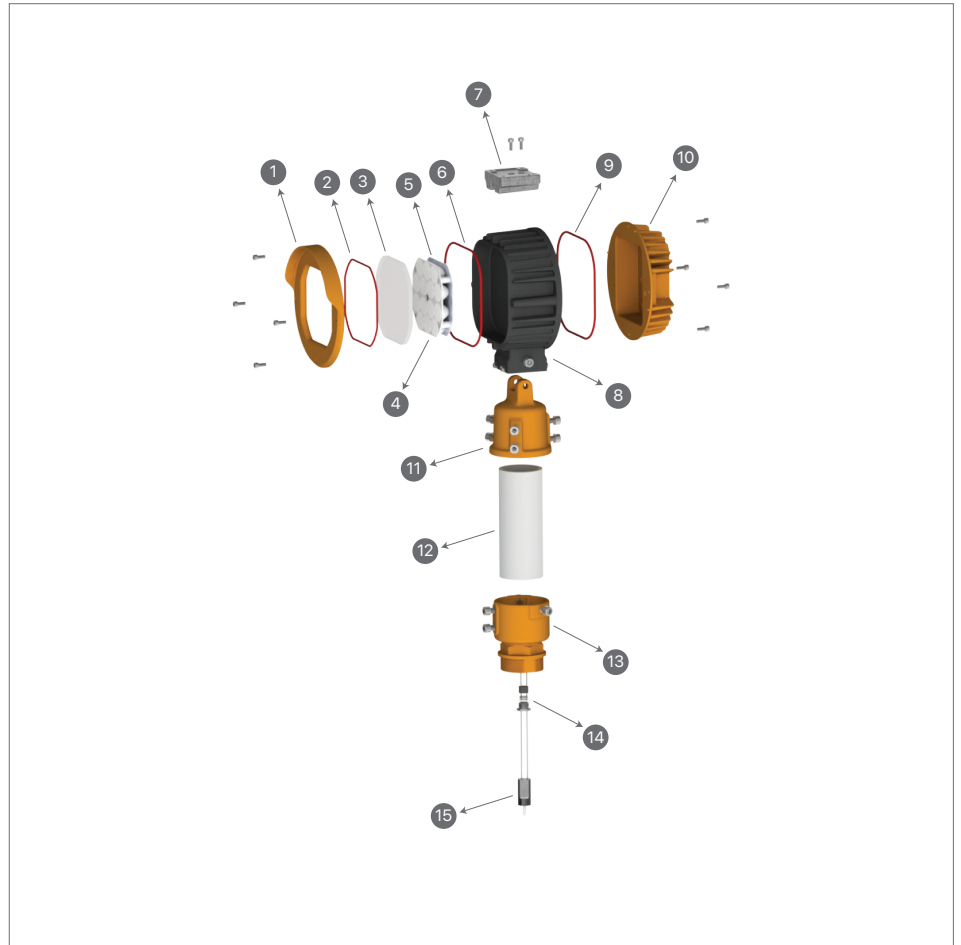
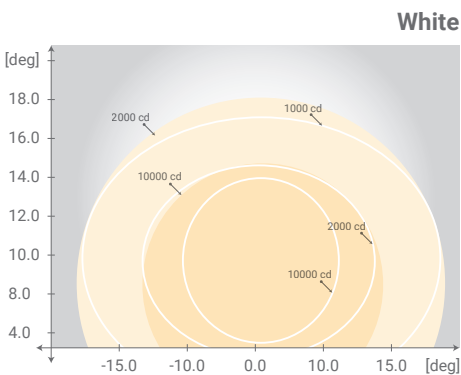
Heater
C: Without Heater
H: With Heater

IN-SF - C

MAIN COMPONENTS OF THE ELEVATED LIGHT UNIT

1. Front Body
2. O-Ring
3. Front Glass
4. TIR
5. LED PCB
6. O-Ring
7. Aiming Device
8. LED Module
9. O-Ring
10. Back Body
11. Aiming Support
12. Pipe (OD60 mm)
13. Breakable Coupling
14. Gland with Accessories
15. Lead Wire

PHOTOMETRIC PERFORMANCE



EL-SF - C

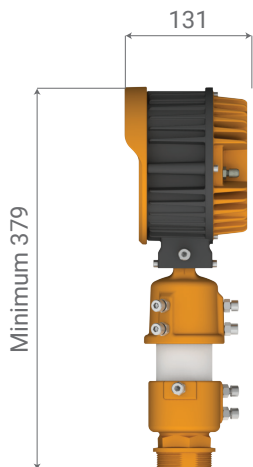
Elevated Sequential Flash Light

Heater

C: Without Heater

H: With Heater

DIMENSIONS



SHIPPING DIMENSIONS & WEIGHTS

	FMCU	Inset Light Unit	Elevated Light Unit
Dimensions(cm)	71*51*29	30*18*16	31*31*12
Weight(kg)	35.2	8.3	3.9

CA-SF

Sequential Flash Light Control Unit