

Aviasafe GmbH

Headoffice 60489 Frankfurt am Main/Germany
Eschborner Land Str. 55

Tel +49 69 340 03 314

Fax +49 69 707 978 04

Factory DE 98597 Fambach Neue Wiese 2

Tel +49 368 482 764 70

info@aviasafe.de

www.aviasafe.de



- IP68: Dust-tight and protected against submersion in water.
- Designed with few mechanical parts, resulting in a more affordable price and allowing for longer maintenance intervals.
- Fully dimmable lights. The light output is variable, similar to a traditional halogen light, operating within the 2.8 A to 6.6 A range.
- The electronics are fully encapsulated.
- Optimized LED performance ensures there are no visual flickers.

INSTALLATION

The fixture can be installed on a baseplate or pipe elbow.

Refer to the user manual DC-MN-IN-EL

ENVIRONMENTAL CONDITIONS

Temperature: -55 °C to +55 °C

-67 °F to +131 °F

Humidity: Up to 100%

COMPLIANCE

ICAO Annex 14 - Volume I

FAA AC150/5345-46 & EB No.67D

EASA CS-ADR-DSN

IEC TS 61827

NATO STANAG 3316

CAA CAP 168

APPLICATIONS

- Approach Centerline & Cross Bars & Side Rows
- Threshold & Wing Bars
- Runway End
- Stop Bars

FEATURES & BENEFITS

- LED Unidirectional Elevated Light.
- Average LED life of 60,000 hours at full intensity but over 100,000 hours in typical operating conditions.
- Very low energy consumption compared to halogen lights, resulting in a lower range of CCRs and transformers. Low life cycle costs due to the long LED lifespan.
- Operates on 3-step or 5-step ferroresonant or thyristor CCRs. In compliance with FAA & EASA standards. Fully compatible with existing Airfield Lighting infrastructure. Installation on the same mounting device as most conventional lights for a straightforward replacement.
- Anti-vibration electronics.

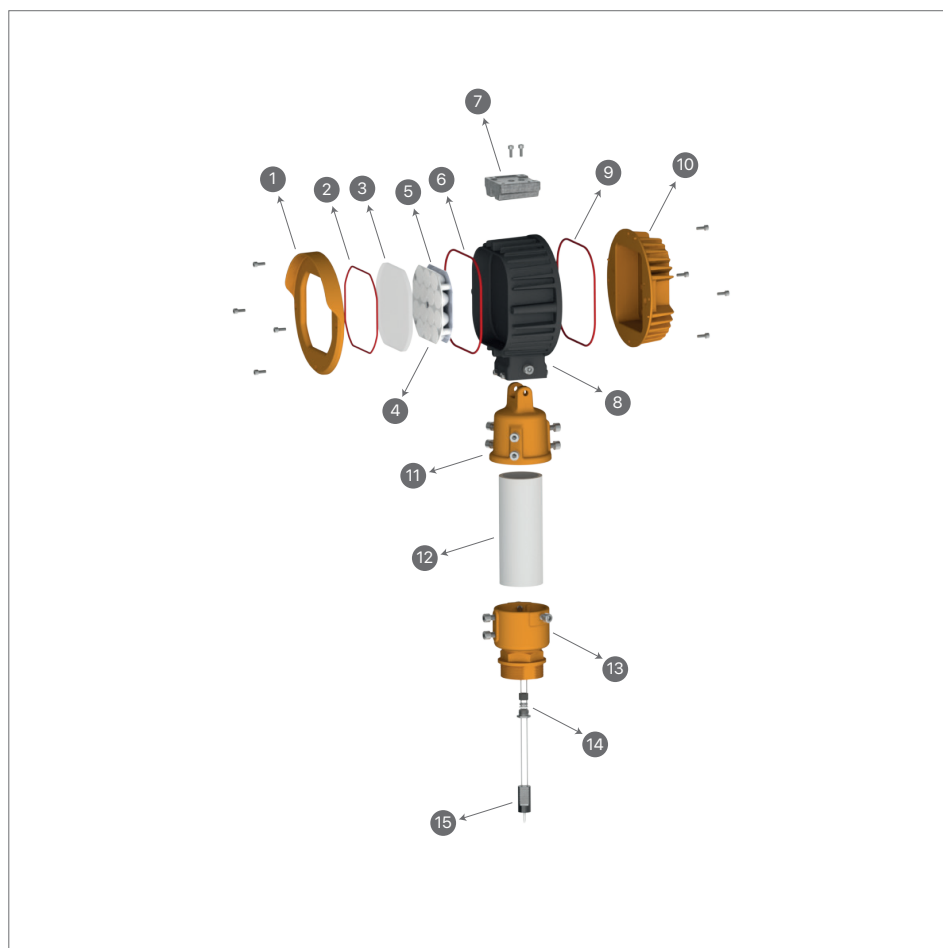
VOLUME & WEIGHT

Weight: 3.9 Kg

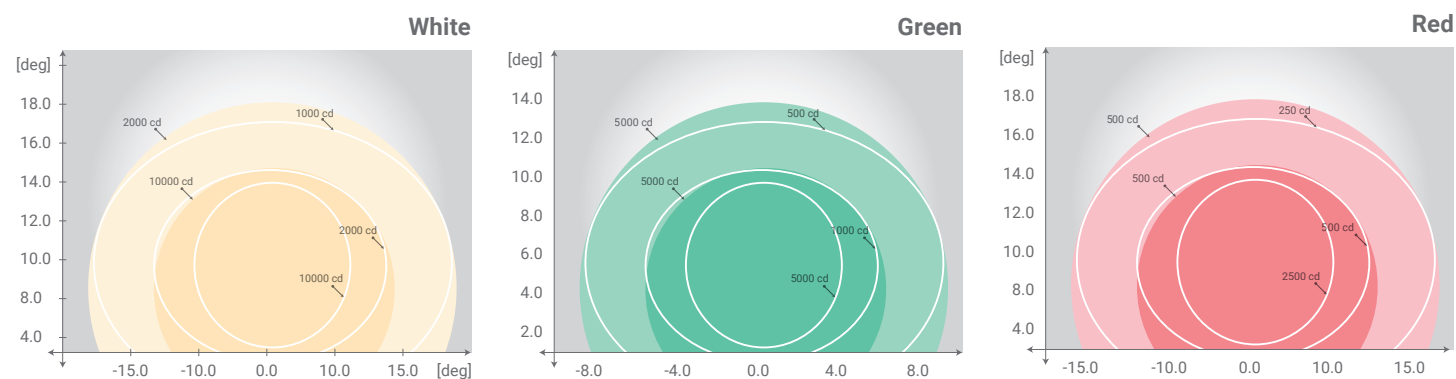
Volume(m³): 0.009

MAIN COMPONENTS OF THE LIGHT UNIT

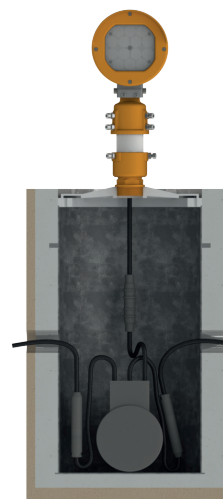
1. Front Body
2. O-Ring
3. Front Glass
4. TIR
5. LED PCB
6. O-Ring
7. Aiming Device
8. LED Module
9. O-Ring
10. Back Body
11. Aiming Support
12. Pipe (OD60 mm)
13. Breakable Coupling
14. Gland with Accessories
15. Lead Wire L-823



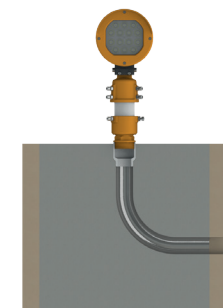
PHOTOMETRIC PERFORMANCE



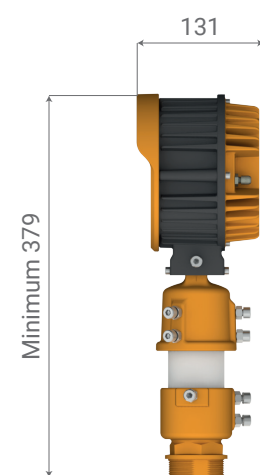
INSTALLATION SECTION



Deep Base 12" and Base Plate



Pipe Elbow



EL-AP - C - Q - C

Basic P/N

Use Code: (Refer to Table A)

Monitoring
Q: Without Monitoring
M: With Monitoring

Heater
C: Without Heater
H: With Heater

ELECTRICAL TABLE

TYPE	Consumption at 6.6A	Power Factor	
		2.8A	6.6A
Light White (w/o Heater)	38 VA	0.96	0.98
Light White (with Heater)	53 VA	0.96	0.98

TABLE A

CODE	USE	COLOR
C	Approach centreline and crossbars	WHITE
R	Approach side row	RED
T	Threshold	GREEN
W	Threshold wing bar	GREEN
E	Runway end	RED
S	Stop bar	RED