



- Fully dimmable light, the light output is like the curve of traditional halogen lights.
- Low protrusion, Style 3 inset light fixtures
- The electronics are fully encapsulated
- Optimized LED performance show no visual flicker
- Built-in voltage surge and lightning protection
- The Dome designed with no negative slope in front of the prism

INSTALLATION

Light fixture can be installed in 12-inch Shallow Base & Deep Base.

**refer to the user manual DC-MN-IN-12*

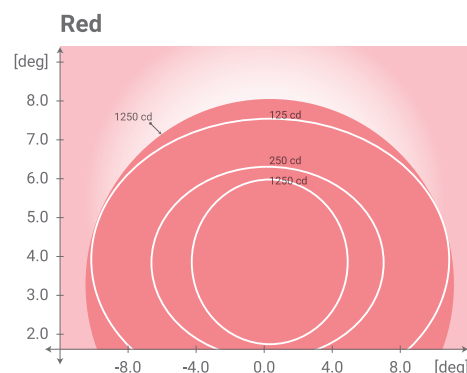
ENVIRONMENTAL CONDITIONS

- **Temperature:** -45 °C to +55 °C
-49 °F to +131 °F
- **Humidity:** Up to 100%

DIMENSIONS & WEIGHT

- **Diameter:** 304 mm
- **Depth:** 106mm
- **Weight:** 7.3 kg

PHOTOMETRIC PERFORMANCE



COMPLIANCE With

ICAO	Annex 14 - Volume I
EASA	CS-ADR-DSN
IEC	TS 61827
NATO	STANAG 3316
CAA	CAP 168
IAAE	TP312

APPLICATIONS

- Runway End

FEATURES & BENEFITS

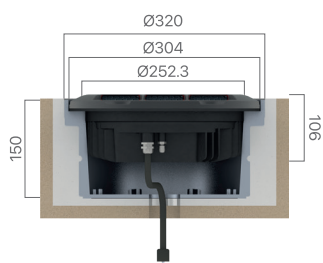
- LED Unidirectional 12"
- LED lamp's lifespan depending on operating conditions is about 50,000 to 100,000 hours or 5 to 10 years.
- Low energy consumption compare to the Halogen types, which means lower loads, lower range of CCRs and transformers.
- Operates on 3 or 5 steps ferroresonant or thyristor CCRs are in compliance with IEC or FAA standards.
- Full compatibility with existing airfield lighting infrastructure. Installation on same mounting device as most conventional lights, for a straightforward replacement.
- IP68: Dust-tight & protected against submersion in water
- Designed with few mechanical parts which make it easier, cheaper and allowing longer intervals to maintenance

COMPONENTS

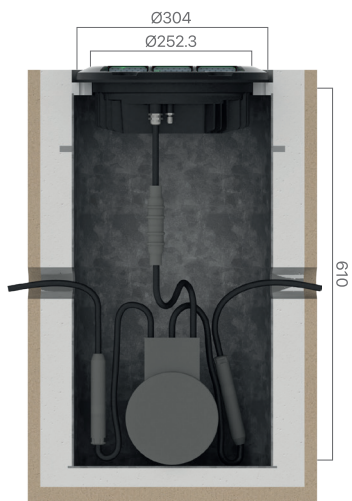
- 1 : Dome (Upper Cover)
- 2 : O-Ring for dome
- 3 : O-Ring for lower cover
- 4 : Prism
- 5 : Prism Gasket
- 6 : Prism Holder Gasket
- 7 : Prism Holder
- 8 : Optical Lens
- 9 : LED module
- 10 : Heat Sink
- 11 : Lower cover with electronic
- 12 : Cable Gland
- 13 : Valve for watertightness test
- 14 : Plug

*Refer to the user manual DC-MN-IN-12

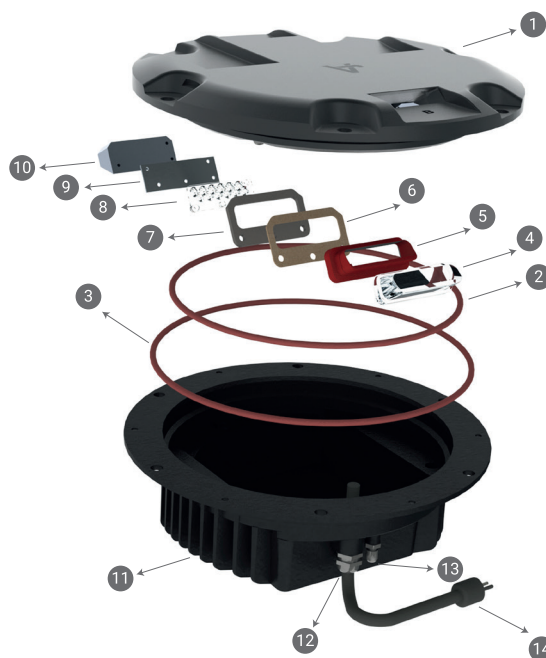
INSTALLATION SECTION



Shallow Base 12"



Deep Base 12"



ELECTRICAL TABLE

TYPE	Consumption at 6.6A	Power Factor	
	1 Plug	2.8A	6.6A
Unidirectional (w/o Heater Kit)	18 VA	0.96	0.98
Unidirectional (with Heater Kit)	58 VA	0.96	0.98

IN-RN M H

12" Inset Light Type For Runway End

Monitoring

- M : with Monitoring
- Q : without Monitoring

Heater

- H : with Heater
- C : without Heater



Frauenlobstraße 8
60487 Frankfurt am Main/Germany
P.O.Box 60442
900220 Frankfurt am Main/Germany

Tel +49 69 970 863 97
Fax +49 69 70 797 804
Email info@aviasafe.de
Web www.aviasafe.de