

Aviasafe GmbH

Headoffice DE 60478 Frankfurt am Main/ Germany
Frauenlob Str.8

Tel +49 69 970 863 97

Fax +49 69 707 978 04

Factory DE 98597 Fambach Neue Wiese 2

Tel +49 368 482 764 70

info@aviasafe.de

www.aviasafe.de



- Designed with few mechanical parts, resulting in a more affordable price and allowing for longer maintenance intervals.
- Fully dimmable lights. The light output is variable, similar to a traditional halogen light, operating within the 2.8 A to 6.6 A range.
- The electronics are fully encapsulated.
- Optimized LED performance ensures there are no visual flickers.
- Built-in voltage surge and lightning protection.

INSTALLATION

The fixture can be installed on a baseplate or pipe elbow.

Refer to the user manual DC-MN-IN-12

ENVIRONMENTAL CONDITIONS

Temperature: -45 °C to +55 °C

-49 °F to +131 °F

Humidity: Up to 100%

COMPLIANCE

- ICAO** Annex 14 - Volume I
- FAA** AC150/5345-46 & EB No.67D
- EASA** CS-ADR-DSN
- IEC** TS 61827
- NATO** STANAG 3316
- CAA** CAP 168

APPLICATIONS

- Taxiway Edge

FEATURES & BENEFITS

- LED Omnidirectional Elevated
- Average LED life of 60,000 hours at full intensity but over 100,000 hours in typical operating conditions.
- Very low energy consumption compared to halogen lights, resulting in a lower range of CCRs and transformers.
- Low life cycle costs due to the long LED lifespan.
- Operates on 3-step or 5-step ferroresonant or thyristor CCRs.
- In compliance with FAA & IEC standards.
- Fully compatible with existing Airfield Lighting infrastructure. Installation on the same mounting device as most conventional lights for a straightforward replacement.
- IP68: Dust-tight and protected against

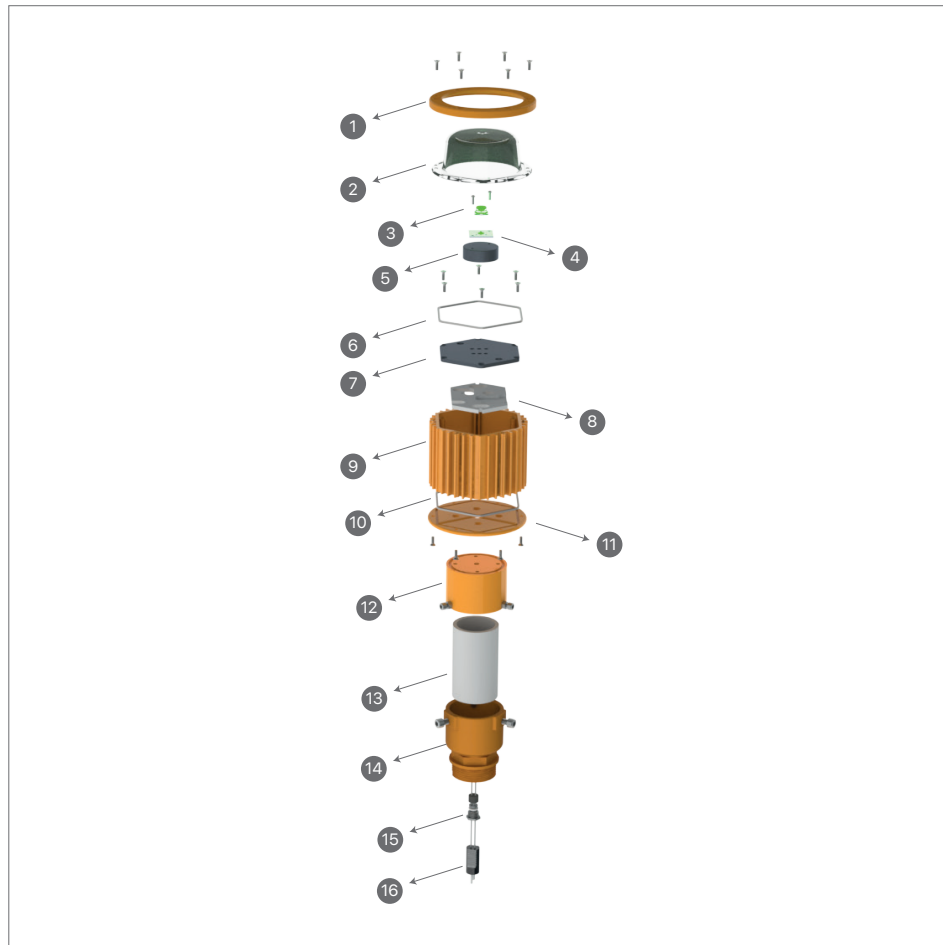
Volume & WEIGHT

Weight: 3.2 Kg

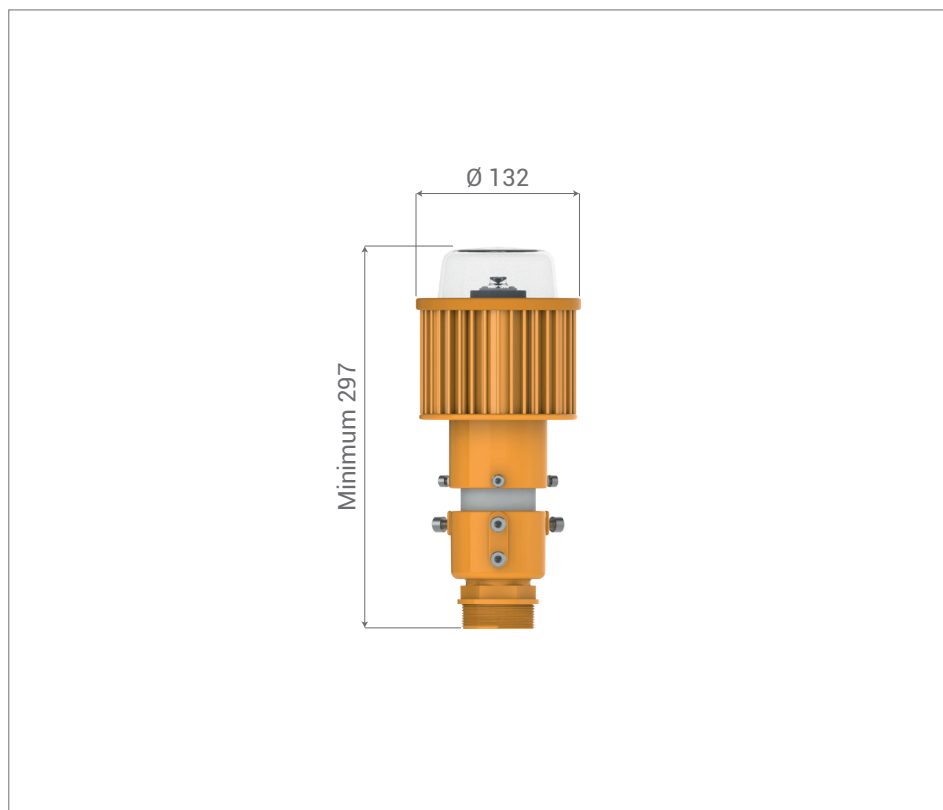
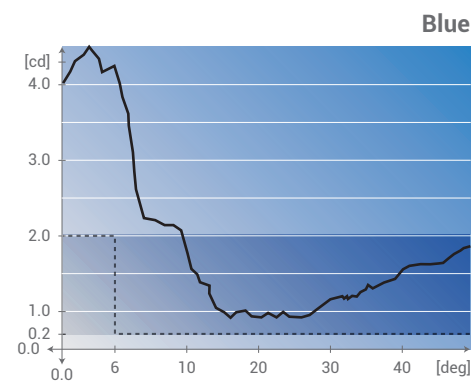
Volume(m³): 0.009

MAIN COMPONENTS OF THE LIGHT UNIT

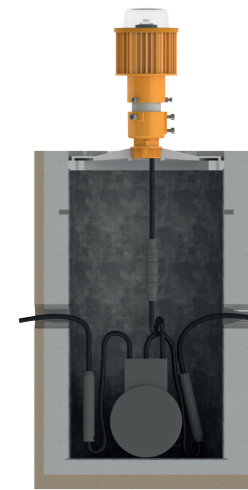
1. Lens Ring
2. Lens
3. TIR
4. LED PCB
5. LED Heatsink
6. O-Ring
7. Top Plate
8. Board Heatsink
9. Main Body
10. O-Ring
11. Bottom Plate
12. Pipe Support
13. Pipe (OD 60 mm)
14. Breakable Coupling
15. Gland with Accessories
16. Lead Wire



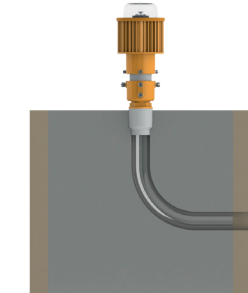
PHOTOMETRIC PERFORMANCE



INSTALLATION SECTION



Deep Base 12" and Base Plate



Pipe Elbow

EL-TE - M - C

Basic P/N

Monitoring
Q: Without Monitoring
M: With Monitoring

Heater:
C: without Heater
H: with heater

ELECTRICAL TABLE

| TYPE | Consumption at 6.6A | Power Factor | |
|---------------------------|---------------------|--------------|------|
| | | 2.8A | 6.6A |
| Light White (w/o Heater) | 6 VA | 0.96 | 0.98 |
| Light White (with Heater) | 21 VA | 0.96 | 0.98 |