

**Aviasafe GmbH**

**Headoffice** DE 60478 Frankfurt am Main/ Germany **Tel** +49 69 970 863 97  
Frauenlob Str.8 **Fax** +49 69 707 978 04

**Factory** DE 98597 Fambach Neue Wiese 2 **Tel** +49 368 482 764 70

info@aviasafe.de www.aviasafe.de



- Designed with few mechanical parts, resulting in a more affordable price and allowing for longer maintenance intervals.
- Fully dimmable lights. The light output is variable, similar to a traditional halogen light, operating within the 2.8 A to 6.6 A range.
- The electronics are fully encapsulated.
- Optimized LED performance ensures there are no visual flickers.
- Built-in voltage surge and lightning protection.

**INSTALLATION**

The fixture can be installed on a baseplate or pipe elbow.

*Refer to the user manual DC-MN-IN-12*

**ENVIRONMENTAL CONDITIONS**

**Temperature:** -45 °C to +55 °C  
-49 °F to +131 °F  
**Humidity:** Up to 100%

**COMPLIANCE**

- ICAO** Annex 14 - Volume I
- FAA** AC150/5345-46 & EB No.67D
- EASA** CS-ADR-DSN
- IEC** TS 61827
- NATO** STANAG 3316
- CAA** CAP 168

**APPLICATIONS**

- Runway Threshold/End

**FEATURES & BENEFITS**

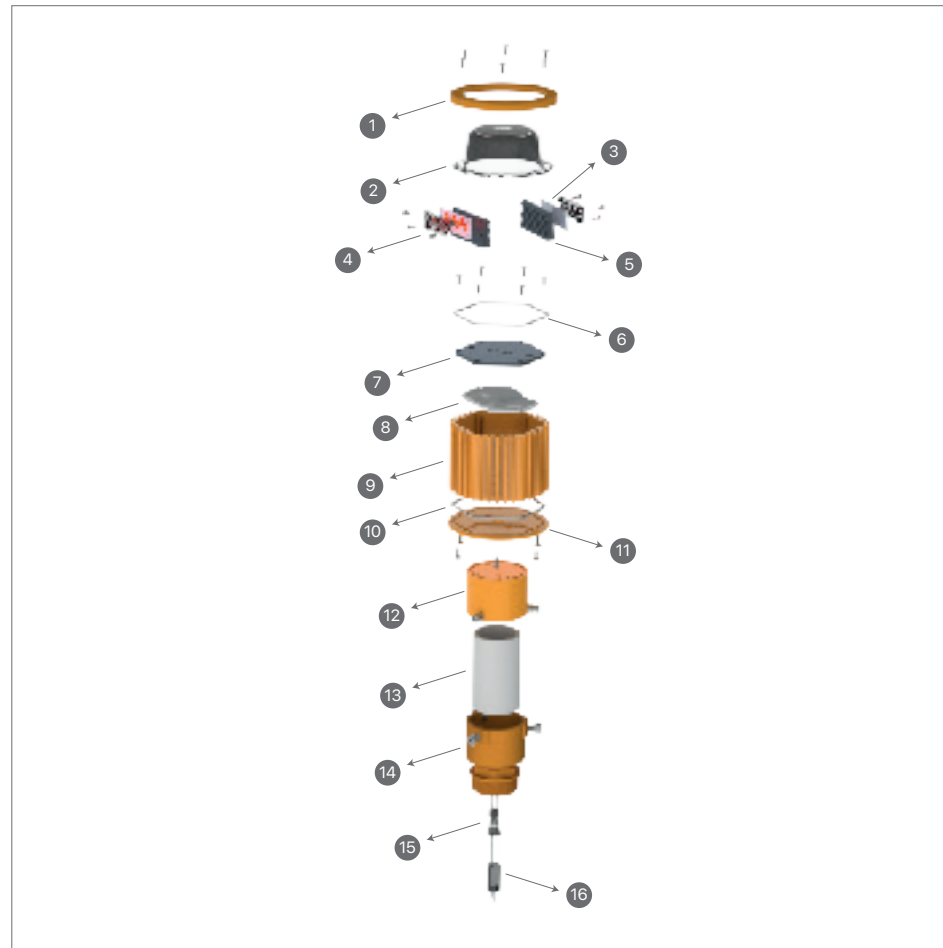
- LED Bidirectional Elevated Light.
- Average LED life of 60,000 hours at full intensity but over 100,000 hours in typical operating conditions.
- Very low energy consumption compared to halogen lights, resulting in a lower range of CCRs and transformers.
- Low life cycle costs due to the long LED lifespan.
- Operates on 3-step or 5-step ferroresonant or thyristor CCRs.
- In compliance with FAA & IEC standards.
- Fully compatible with existing Airfield Lighting infrastructure. Installation on the same mounting device as most conventional lights for a straightforward replacement.
- IP68: Dust-tight and protected against

**Volume & WEIGHT**

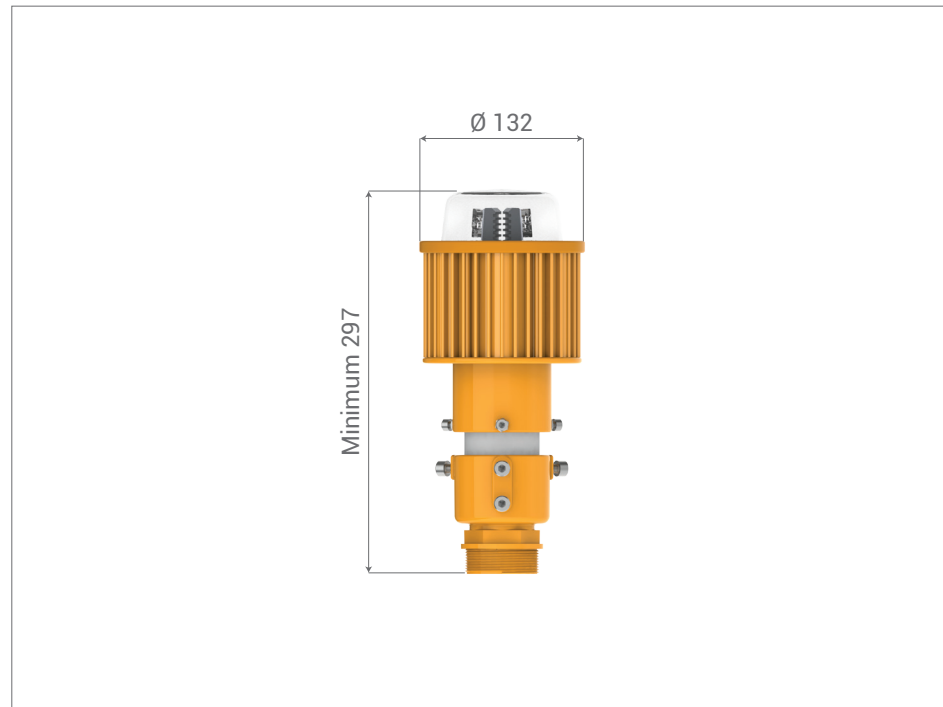
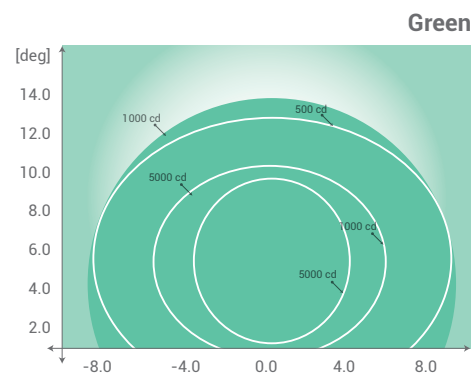
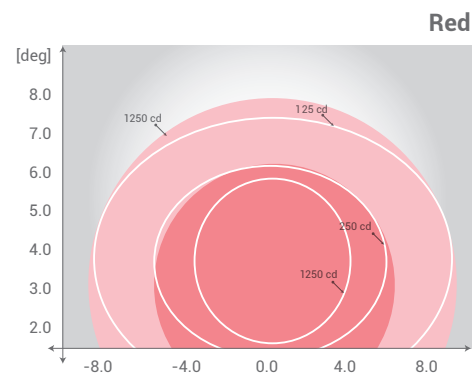
**Weight:** 2.9 Kg  
**Volume(m³):** 0.009

**MAIN COMPONENTS OF THE LIGHT UNIT**

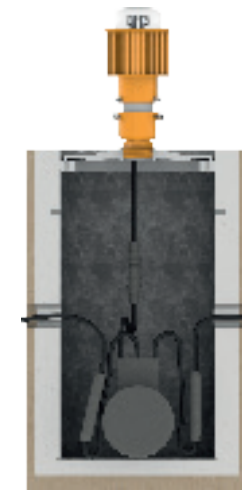
1. Lens Ring
2. Lens
3. LED PCB
4. TIR
5. LED Heatsink
6. O-Ring
7. Top Plate
8. Board Heatsink
9. Main Body
10. O-Ring
11. Bottom Plate
12. Pipe Support
13. Pipe (OD 60 mm)
14. Breakable Coupling
15. Gland with Accessories
16. Lead Wire



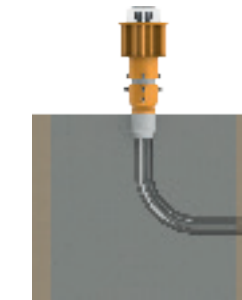
**PHOTOMETRIC PERFORMANCE**



**INSTALLATION SECTION**



Deep Base 12" and Base Plate



Pipe Elbow

**EL-RS M C**

Basic P/N

Monitoring  
Q: Without Monitoring  
M: With Monitoring

Heater  
C: without Heater  
H: with heater

**ELECTRICAL TABLE**

TYPE	Consumption at 6.6A	Power Factor	
		2.8A	6.6A
Light White (w/o Heater)	40 VA	0.96	0.98
Light White (with Heater)	55 VA	0.96	0.98