

**Aviasafe GmbH**

**Headoffice** DE 60478 Frankfurt am Main/ Germany    **Tel** +49 69 970 863 97  
Frauenlob Str.8    **Fax** +49 69 707 978 04

**Factory** DE 98597 Fambach Neue Wiese 2    **Tel** +49 368 482 764 70

info@aviasafe.de    www.aviasafe.de



- Designed with few mechanical parts, resulting in a more affordable price and allowing for longer maintenance intervals.
- Fully dimmable lights. The light output is variable, similar to a traditional halogen light.
- The electronics are fully encapsulated.
- Optimized LED performance ensures there are no visual flickers.
- Built-in voltage surge and lightning protection.

**INSTALLATION**

The fixture can be installed on a baseplate or a pipe elbow.

**ENVIRONMENTAL CONDITIONS**

**Temperature:** -45 °C to +55 °C  
-49 °F to +131 °F  
**Humidity:** Up to 100%

**COMPLIANCE**

**ICAO** Annex 14 - Volume II  
**IEC** TS 61827  
**NATO** STANAG 3619

**FEATURES & BENEFITS**

- LED Omnidirectional Elevated Light.
- Average LED life of 60,000 hours at full intensity but over 100,000 hours in typical operating conditions.
- Very low energy consumption compared to halogen lights, resulting in a lower range of CCRs and transformers.
- Low life cycle costs due to the long LED lifespan.
- Can Operate on 3-step or 5-step ferroresonant or thyristor CCRs and 220 V.
- IP68: Dust-tight & protected against submersion in water.

**APPLICATIONS**

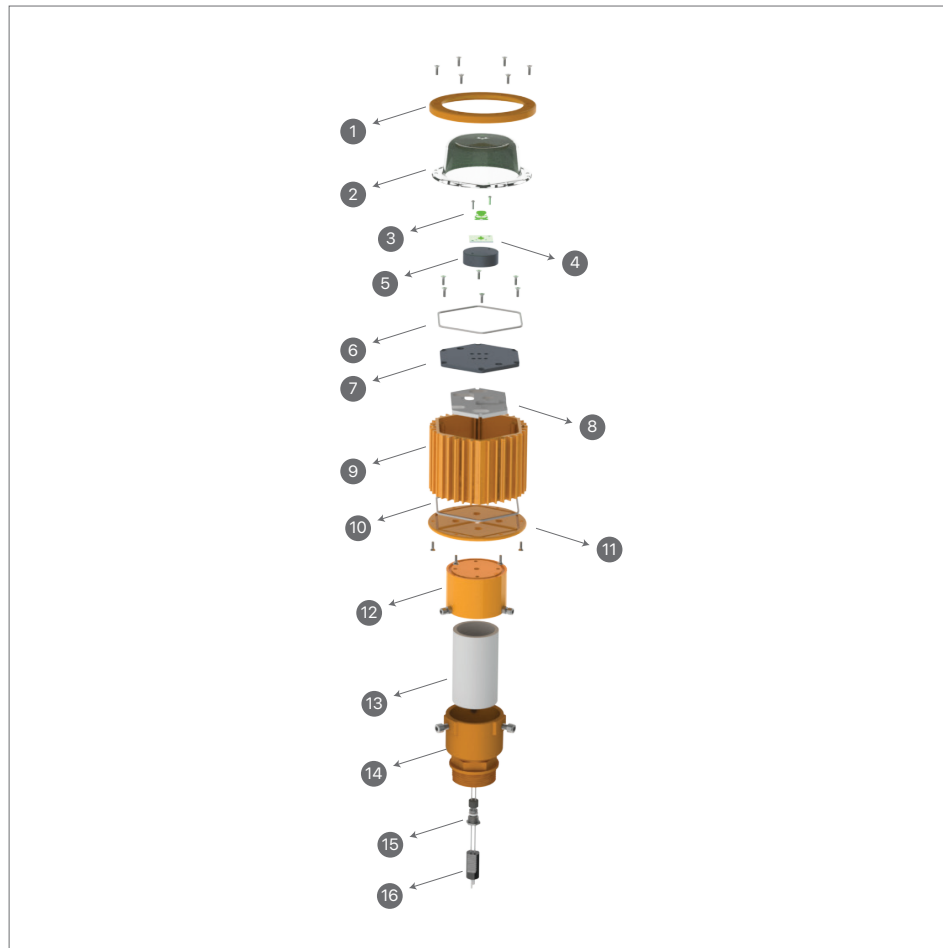
- Heliport / Helipad / Helideck
- Touchdown And Lift Off Area (TLOF)
- Final Approach And Take Off Area (FATO)
- Aiming Point

**VOLUME & WEIGHT**

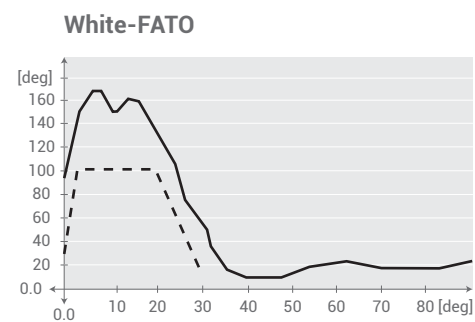
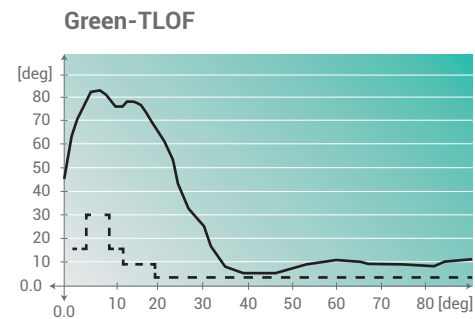
**Weight:** 2.9 kg  
**Volume:** 0.009 m<sup>3</sup>

**MAIN COMPONENTS OF THE LIGHT UNIT**

1. Lens Ring
2. Lens
3. TIR
4. LED PCB
5. LED Heatsink
6. O-Ring
7. Top Plate
8. Board Heatsink
9. Main Body
10. O-Ring
11. Bottom Plate
12. Pipe Support
13. Pipe (OD 60 mm)
14. Breakable Coupling
15. Gland with Accessories
16. Lead Wire

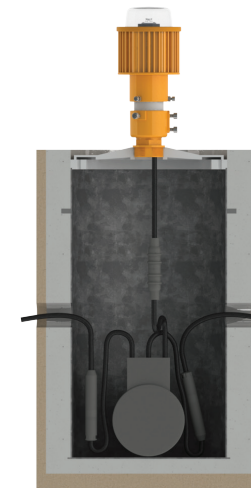


**PHOTOMETRIC PERFORMANCE**

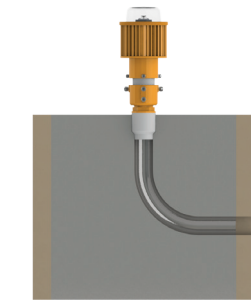


ELECTRICAL TABLE				
TYPE	Consumption at 6.6A		Power Factor	
	1 Plug	2.8A	6.6A	
Omnidirectional Without Heater(White)	7 VA	0.96	0.98	
Omnidirectional Without Heater(Green)	5 VA	0.96	0.98	
Omnidirectional With Heater	22 VA	0.96	0.98	

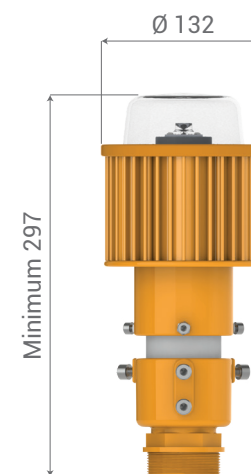
**INSTALLATION SECTION**



Deep Base 12" and Base Plate



Pipe Elbow



**EL-HL - G - 0 - C - 0 - V**

**Basic P/N**

**Color**

- G : Green
- W : White

**Monitoring**

- M : With Monitoring
- Q : Without Monitoring

**Heater**

- H : With Heater
- C : Without Heater

**Height**

- 0 : Whitout Pole
- 25 : 25 cm

**Supply Mode**

- V : 220 V
- A : 6.6 A